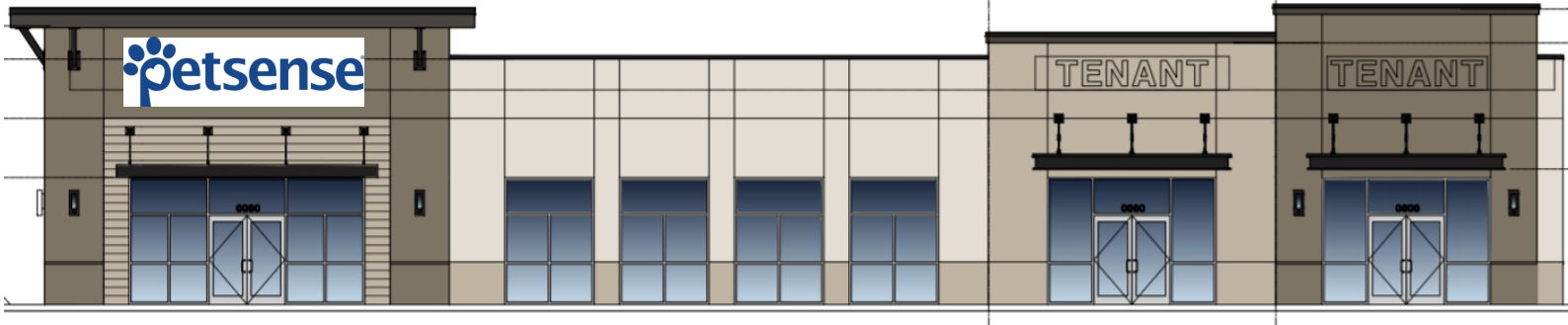


Coming Soon - FOR LEASE

Kissimmee, FL




Available End Cap Unit



Pleasant Hill Rd, Kissimmee FL 34758

Property Highlights

- Outparcel to Lowes Development in Poinciana
- Next to Newly Open  **TACO BELL**
- Recently installed direct curb cut to Pleasant Hill Rd
- 2.56 Acre Development Site including Brand New Taco Bell,
- Multi Tenant Retail Building Coming Soon with Petsense

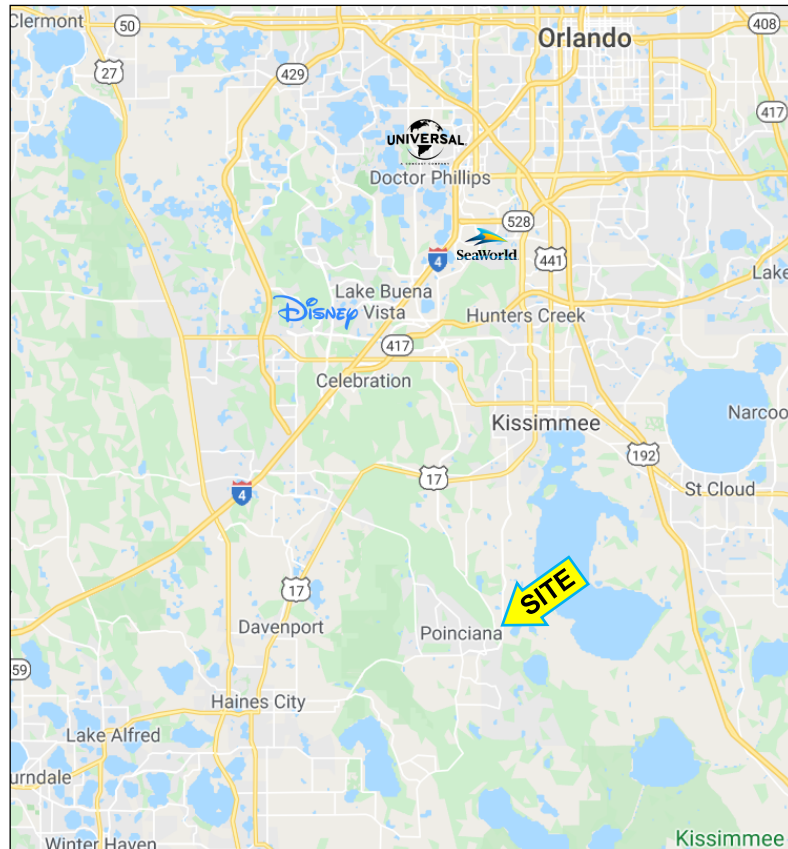
Available Space: 3,406 sf ± Endcap (Can be Subdivided)

Traffic Count: 40,000 ± CPD

Trade Area - Demographics

Population-90,981 Households-29,762

Demographics	1mile	3mile	5mile
Population (2019)	2,740	23,441	75,324
Population (2024)	3,293	27,537	86,994
Average HH Income	\$58,162	\$53,639	\$61,143



FOR LEASE

Kissimmee, FL

Proposed Site Plan

