

Proposed Development

Davenport, FL

FOR LEASE or BTS



HWY 27, Davenport, Florida 33837

Property Highlights

- Proposed development near Posner Park Commons Coming Soon!
- Excellent Access and Exposure along US HWY 27
- Located in the Deer Creek Development with frontage on HWY 27 in Davenport, FL, half a mile from the I-4 interchange
- Several of the area's QSR's have nearly the highest sales in central Florida

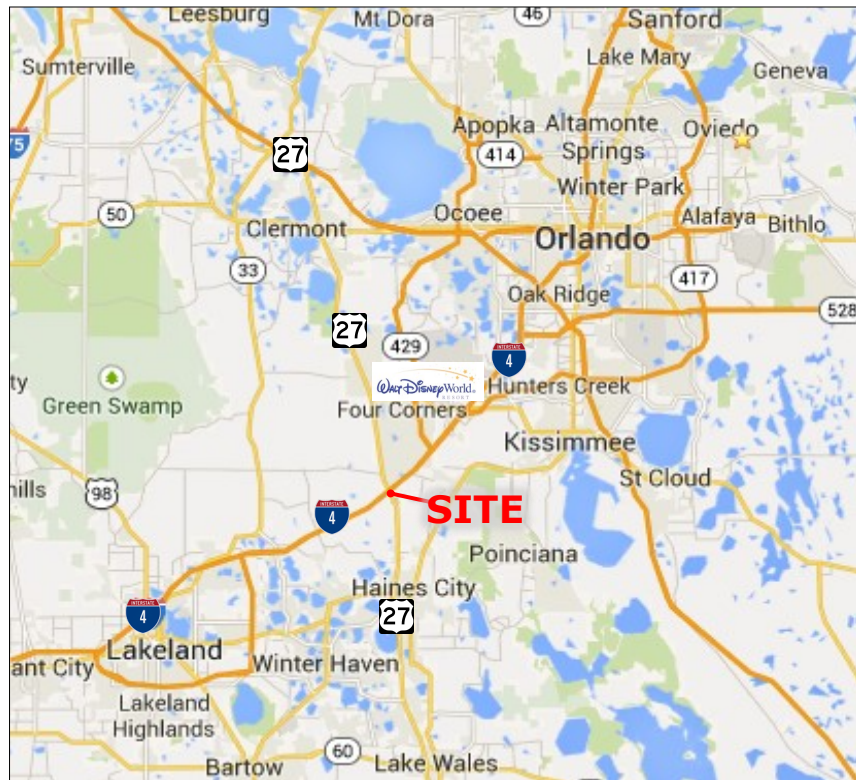
Traffic Count: 43,264 CPD

Frontage: 264 ft. ±

Land Area: 1.51 ± acres

Demographics 2016

| | 1 Mile | 3 Miles | 5 Miles |
|----------------|----------|----------|----------|
| Population | 4,896 | 15,480 | 40,364 |
| Avg. HH Income | \$54,610 | \$58,563 | \$61,139 |



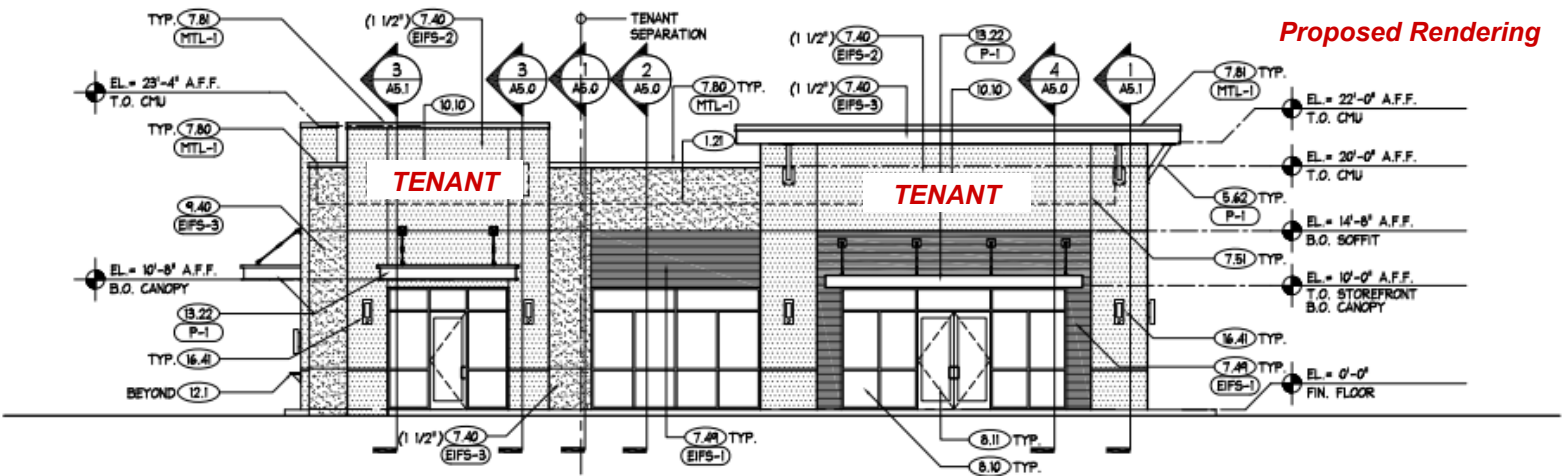
REAL PROPERTY SPECIALISTS, INC
Appraisers • Brokers • Consultants

407-812-8000
Www.RealPropertySpecialists.com

Proposed Development

Davenport, FL

FOR LEASE or BTS



407-812-8000
 Www.RealPropertySpecialists.com

REAL PROPERTY SPECIALISTS, INC
 Appraisers • Brokers • Consultants

The information contained herein is submitted subject to errors, omissions, prior sale or lease, or withdrawal without notice.