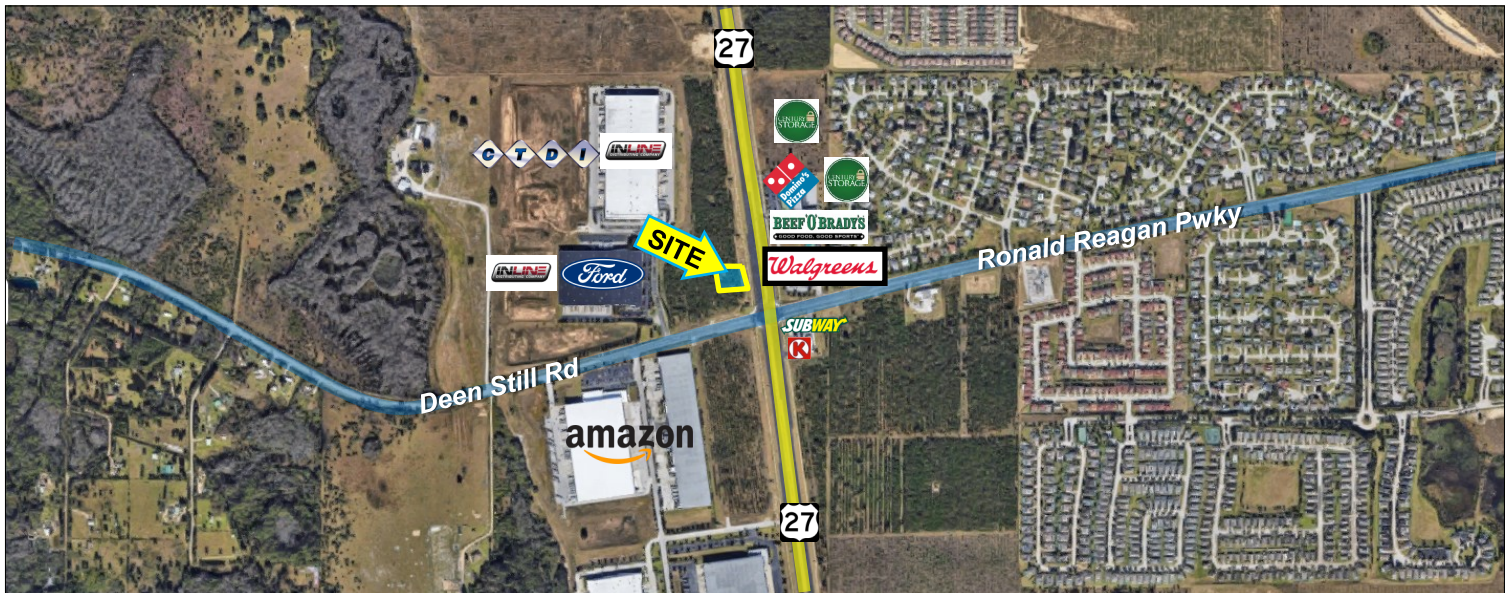


Commercial Site— Lease, Ground Lease, or Built to Suit

Davenport, FL

REAL PROPERTY SPECIALISTS, INC.
Appraisers • Brokers • Consultants



200 Deen Still Rd, Davenport, FL 33897

Property Highlights

- Exceptional Location, located directly at the intersection of Highway 27 and Ronald Reagan Pkwy (aka Deen Still Rd)
- Surrounded by industry giant's warehouses
- Fantastic Access and Exposure along US HWY 27 as well as easy access to Interstate 4
- Nearby the Posner Park Commons filled with major retailers such as: DICK's Sporting goods, PetSmart, GNC, ROSS, and more.
- Endcap, inline, and free standing opportunities

Traffic Counts: 33,000 AADT ±

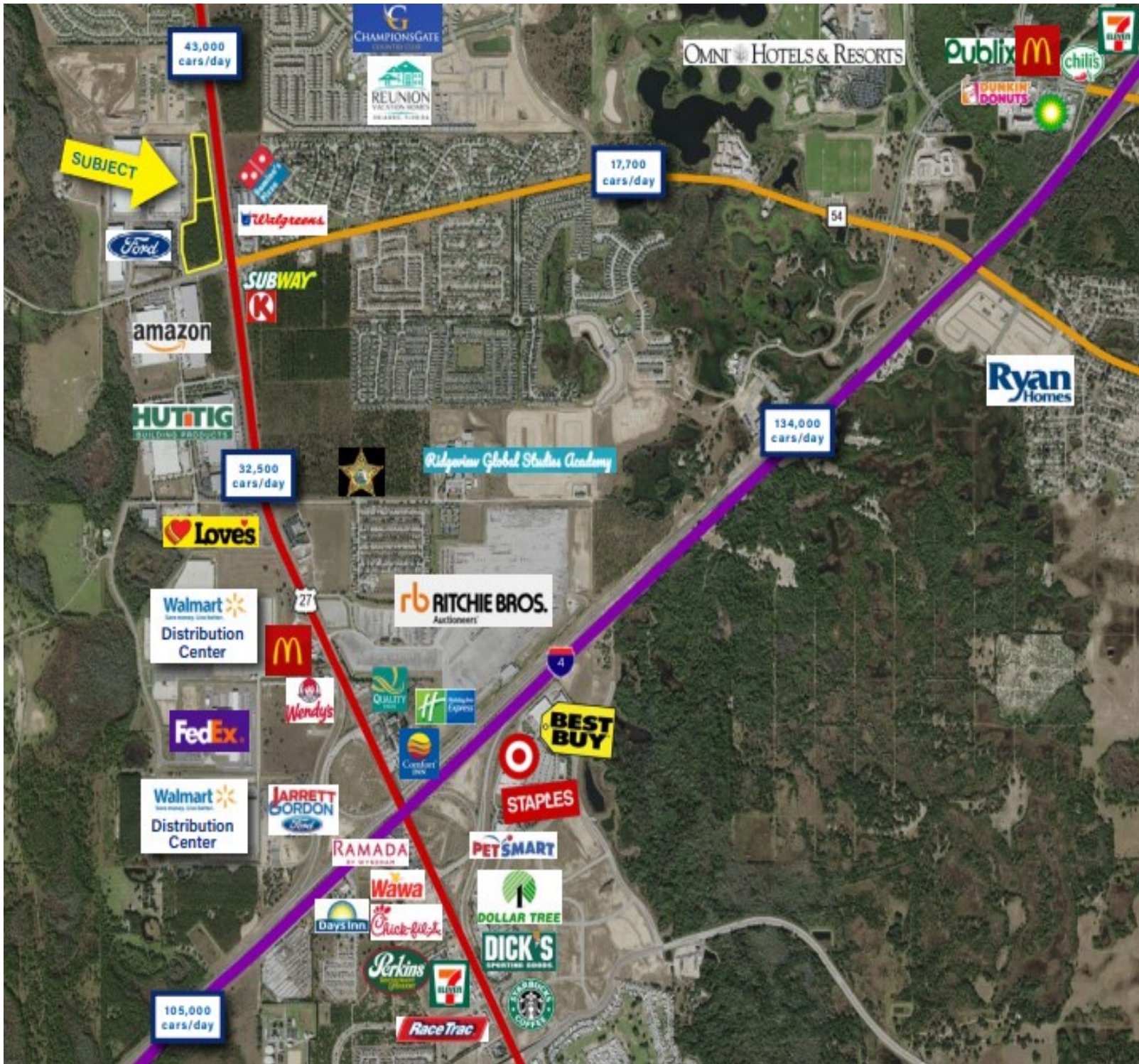


Demographics	2mile	5mile	10mile
Population (2022)	15,935	67,262	189,700
Population (2027)	19,641	82,620	231,733
Average HH Income	\$78,242	\$75,640	\$75,752

Available For Lease

Davenport, FL

REAL PROPERTY SPECIALISTS, INC.
Appraisers • Brokers • Consultants



REAL PROPERTY SPECIALISTS, INC.
Appraisers • Brokers • Consultants

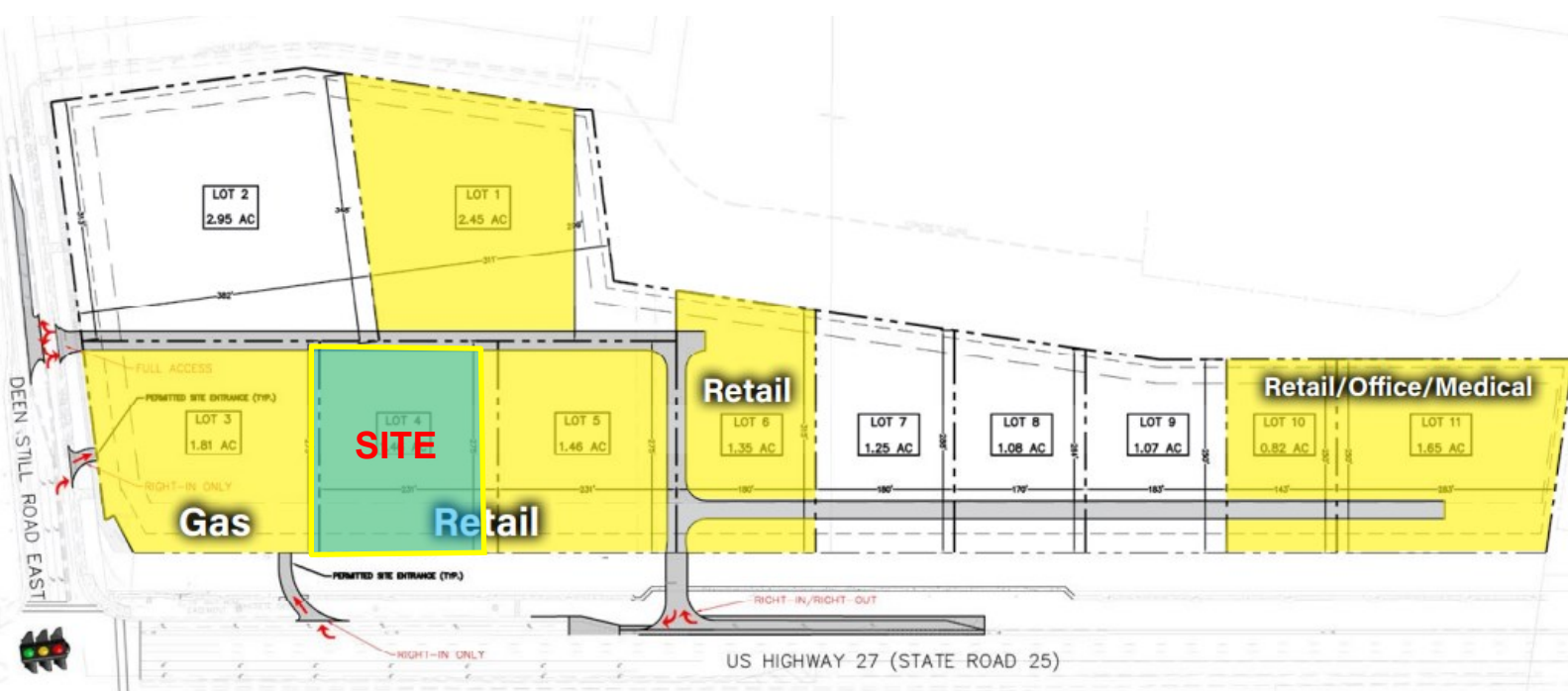
For More Information Call 407.812.8000
www.realpropertyspecialists.com

Available For Lease

Davenport, FL



Site Plan



For More Information Call 407.812.8000

www.realpropertyspecialists.com

