

Bee Line Center

Orlando, FL

FOR LEASE



10249 S John Young Pkwy, Orlando FL 32837

Property Highlights

- Join **State Farm** Trustco Bank, Kinder Care & More
- Retail opportunity on John Young Parkway
- Excellent Visibility on High Traffic road
- Centrally located around I-Drive, Shopping Malls, Airport, and Theme Parks

Traffic Count: 59,150 VPD ±

Daytime Population:

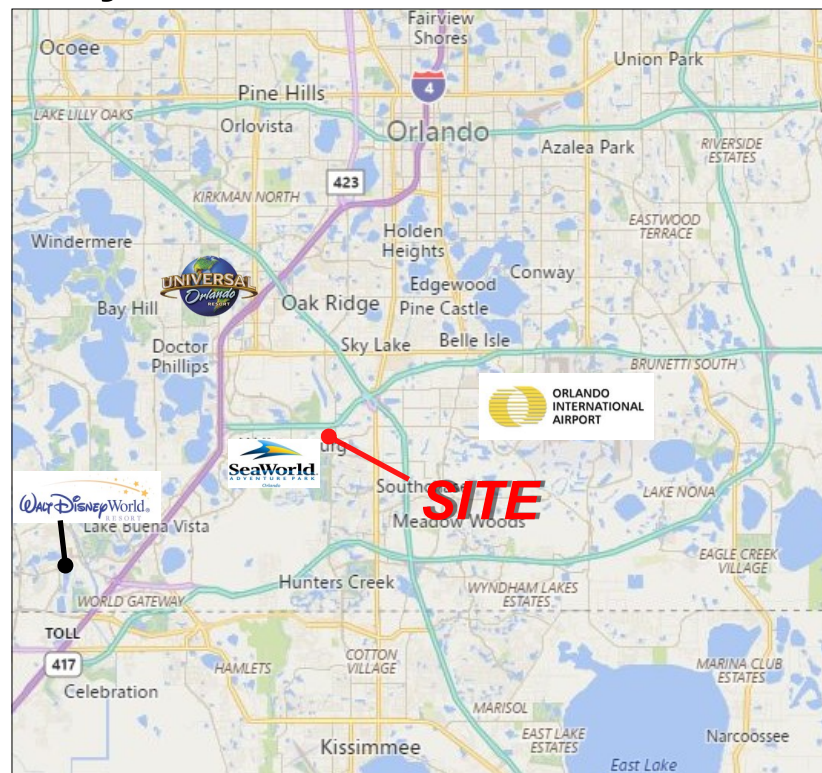
20,000+ influx (within 3 miles)

Spaces Available:

Suite 111 (1,931 SF) Inline

Demographics 2018

	1 Mile	3 Miles	5 Miles
Population	6,107	43,246	181,080
Avg. HH Income	\$54,525	\$63,381	\$66,926



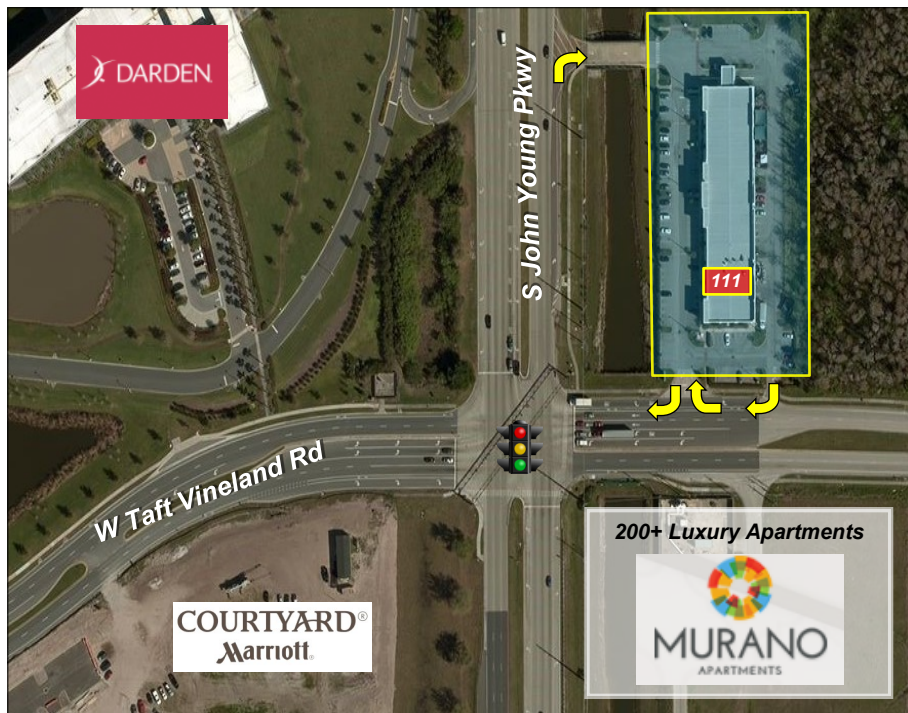
REAL PROPERTY SPECIALISTS, INC
Appraisers • Brokers • Consultants

407-812-8000
www.RealPropertySpecialists.com

Bee Line Center

Orlando, FL

FOR LEASE



407-812-8000
www.RealPropertySpecialists.com

REAL PROPERTY SPECIALISTS, INC
Appraisers • Brokers • Consultants

The information contained herein is submitted subject to errors, omissions, prior sale or lease, or withdrawal without notice.