

Apopka Commons

Apopka, FL

FOR LEASE



1560-1630 W Orange Blossom Trl, Apopka FL 32712

Property Highlights

- Located on SR 441/ just west of SR 451
- Fast Growing Area on west side of Apopka
- Shopping Center Anchored by **Staples, Dollar Tree, Home Depot, Kumon & Orlando Health**
- Surrounding retailers include Lowes, Chili's, Wendy's, McDonald's, Panera Bread & Winn Dixie

Available Spaces:

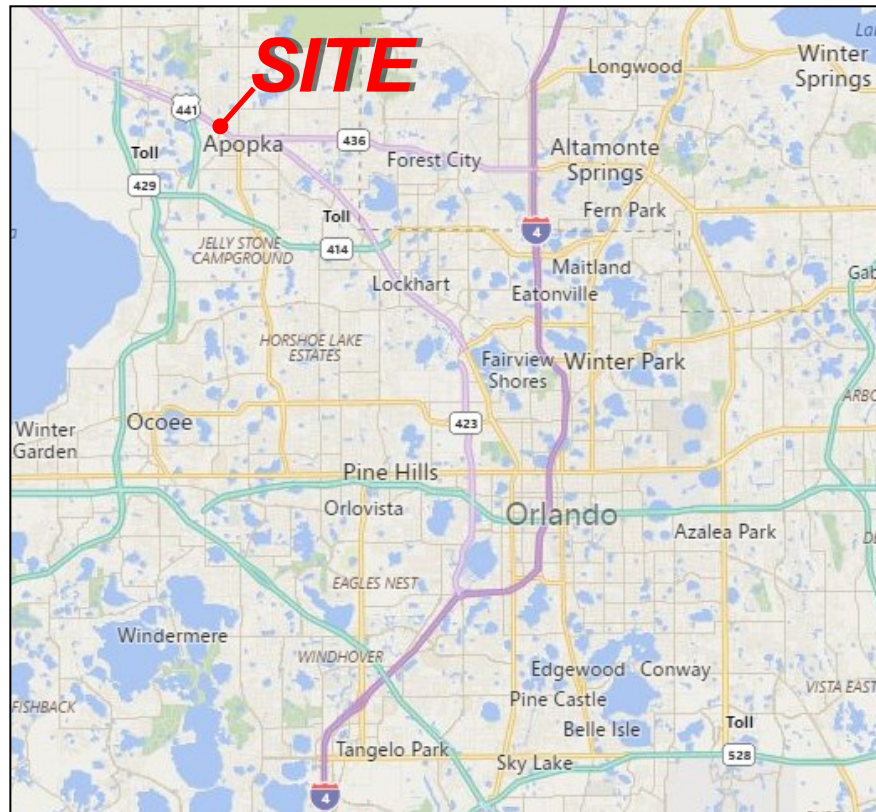
1,200 SF

1,525 SF turnkey office space

(Both vacancies can be combined for total of 2,725 SF)

Demographics 2017

	1 Mile	3 Miles	5 Miles
Population	6,791	43,895	89,805
Avg. HH Income	\$84,766	\$71,143	\$74,681



REAL PROPERTY SPECIALISTS, INC

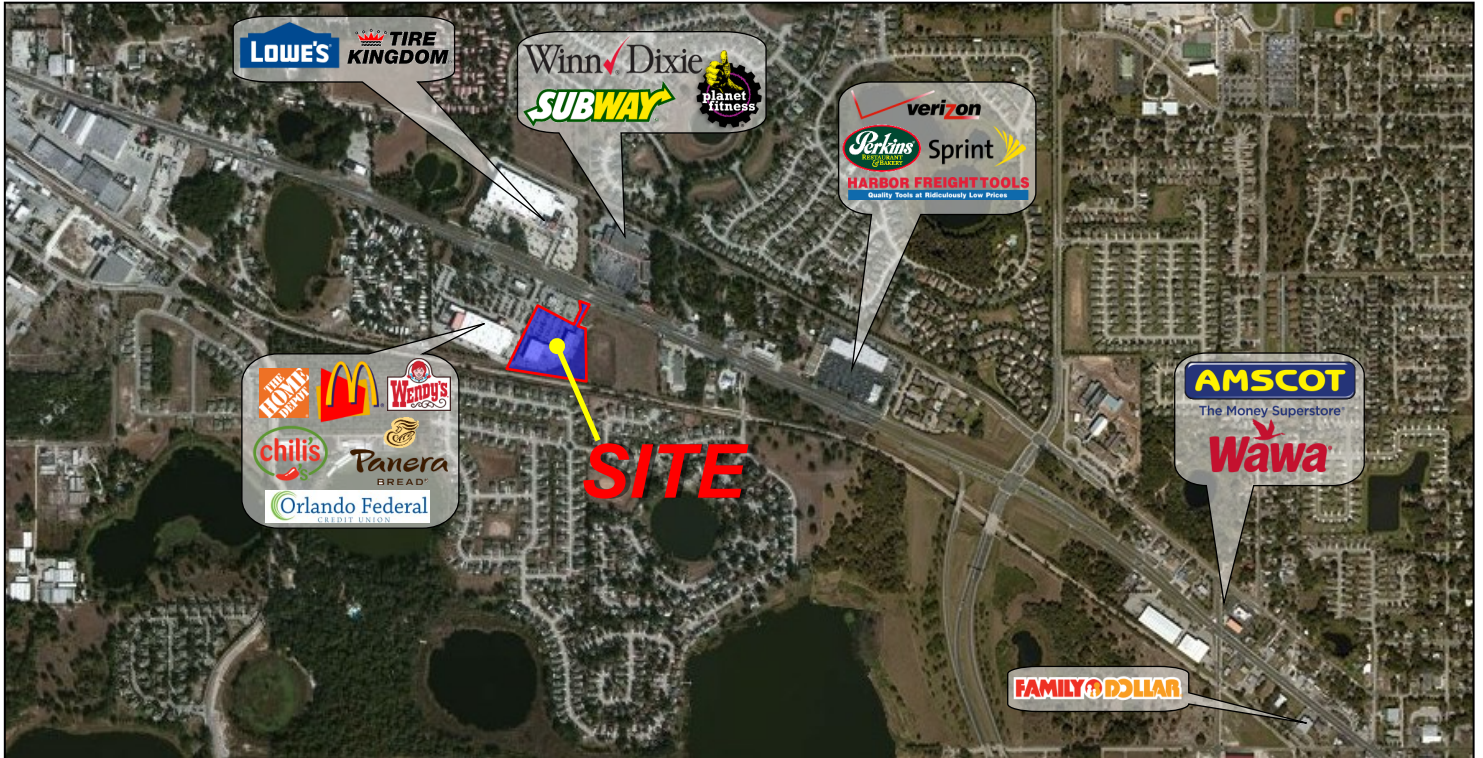
Appraisers • Brokers • Consultants

Allan Holman
C: 407-484-7355 Email: Allan@rps-fl.com

Apopka Commons

Apopka, FL

FOR LEASE



Real Property Specialists
C: 407-484-407-812-8000
www.realpropertyspecialists.com -fl.com

REAL PROPERTY SPECIALISTS, INC
Appraisers • Brokers • Consultants

The information contained herein is submitted subject to errors, omissions, prior sale or lease, or withdrawal without notice.