

# Former Restaurant Site

Kissimmee, Florida

**FOR LEASE**



**5877 W. Orlo Bronson Mem. Hwy, Kissimmee**

## Property Highlights

- 6800 SF high-end 2nd Gen space is a modern looking highly visible end-cap.
- Located at the SEC of S. International Dr. @ Hwy 192 between Celebration and the family fun center Old Town, in Kissimmee, FL.
- This attractive building is very recognizable with mega signage to add even more to its roadside side presence.
- Access is great off Hwy 192 as the retail plaza has traffic lights at both ends of the property with a right in right out just in front of the space.



## Demographics 2008

	3 Miles	5 Miles
Population	15,890	45,849
Average Age	38.1	35
Avg. HH Income	\$77,823	\$70,533

2345 W Sand Lake Rd, Suite 100  
Orlando, FL 32809

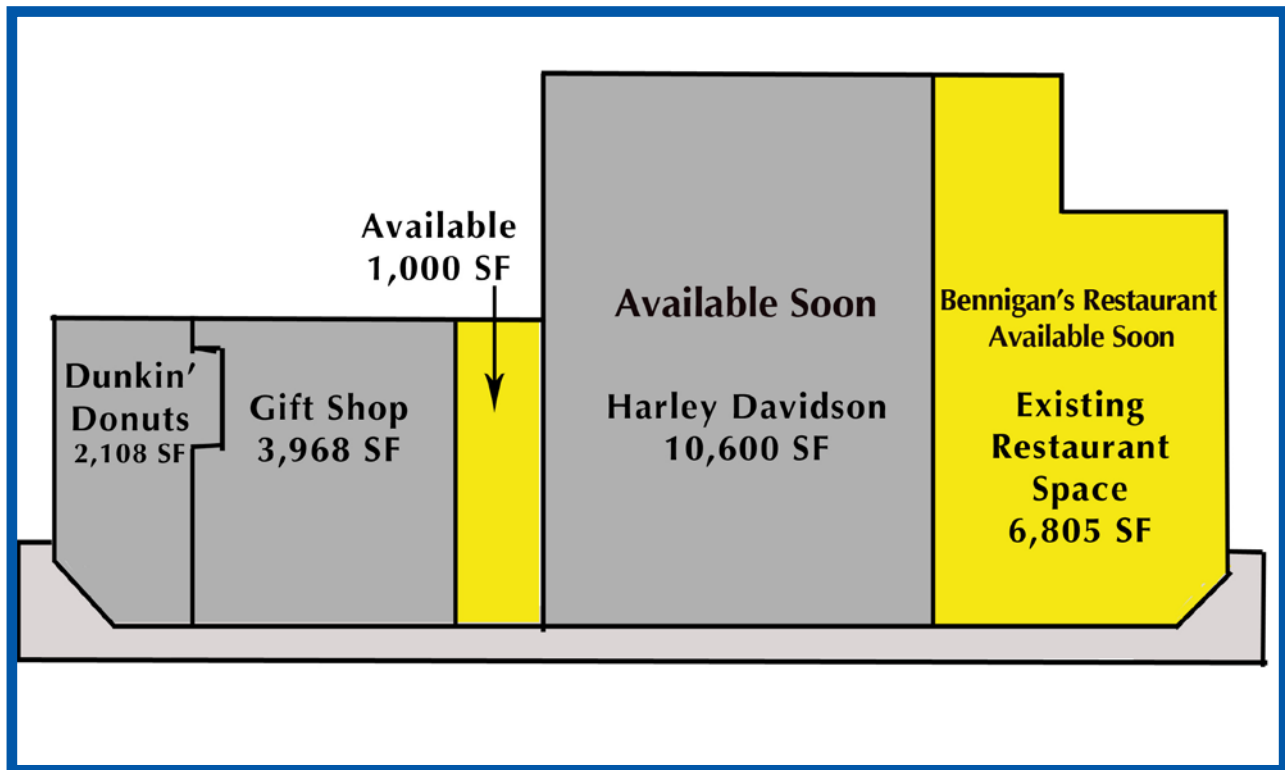
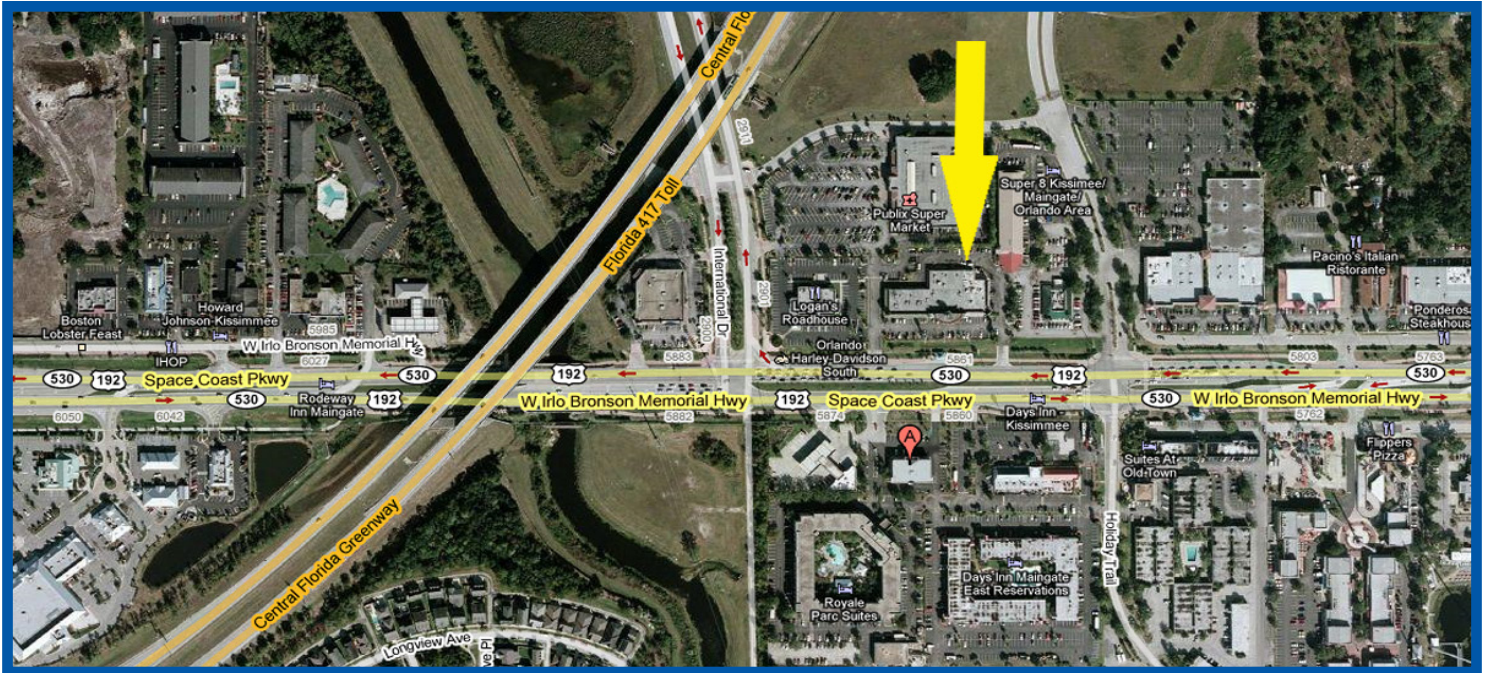
9622 W Linebaugh Avenue  
Tampa, FL 33626

**T: 407.812-8000 • F: 407.812.8885**  
**www.RealPropertySpecialists.com**

**REAL PROPERTY SPECIALISTS, INC**  
Appraisers • Brokers • Consultants

# Holiday Trails Plaza

Kissimmee, Florida



T: 407.812-8000 • F: 407.812.8885  
www.RealPropertySpecialists.com

  
**REAL PROPERTY SPECIALISTS, INC**  
Appraisers • Brokers • Consultants

The information contained herein is submitted subject to errors, omissions, prior sale or lease, or withdrawal without notice.