

Bank Building

Orlando, Florida

FOR LEASE or SALE



SE Quadrant of SR 436 (Semoran Blvd.) and Highway 50 (Colonial Drive)

Property Highlights

- Available for sale or lease
- Brand new building — never occupied
- Land size: 1 Acre
- Building size: 5,600 SF
- Bank Lanes: 1 and an ATM drive-up



Demographics 2008

	1 Mile	3 Miles	5 Miles
Population	9,146	103,446	281,517
Average Age	32.3	35.4	36.6
Avg. HH Income	\$53,469	\$67,691	\$78,071

6700 Conroy-Windermere Road, Suite 230
Orlando, FL 32835

9622 W Linebaugh Avenue
Tampa, FL 33626

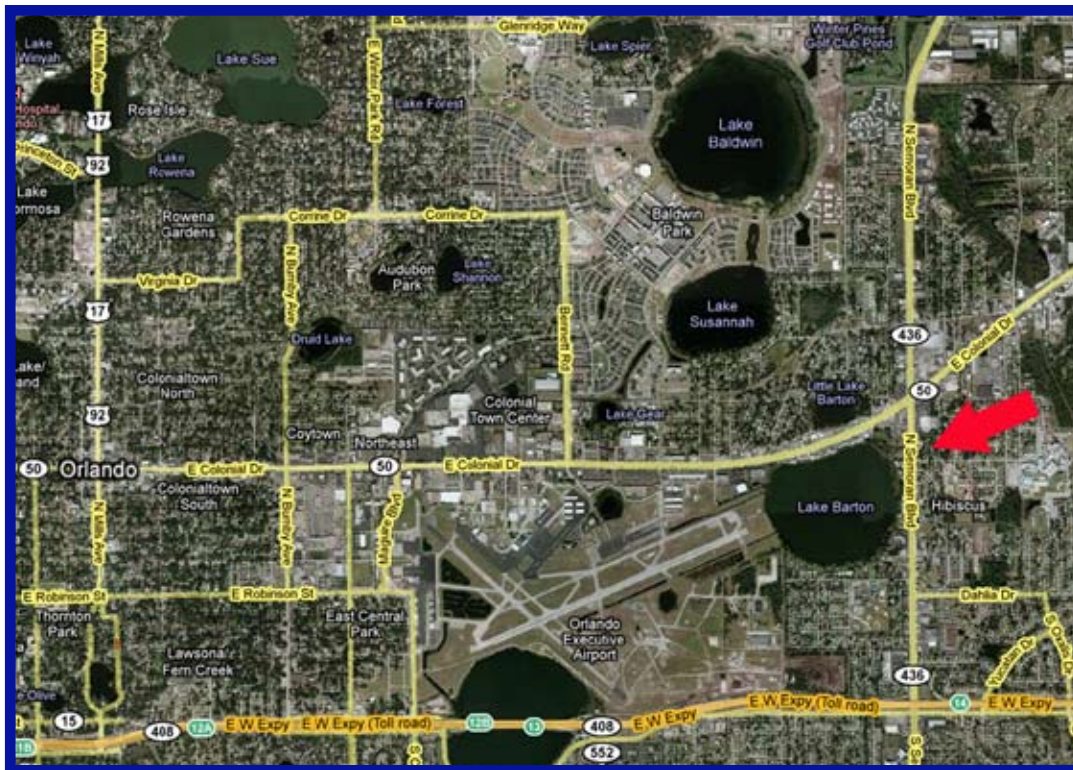
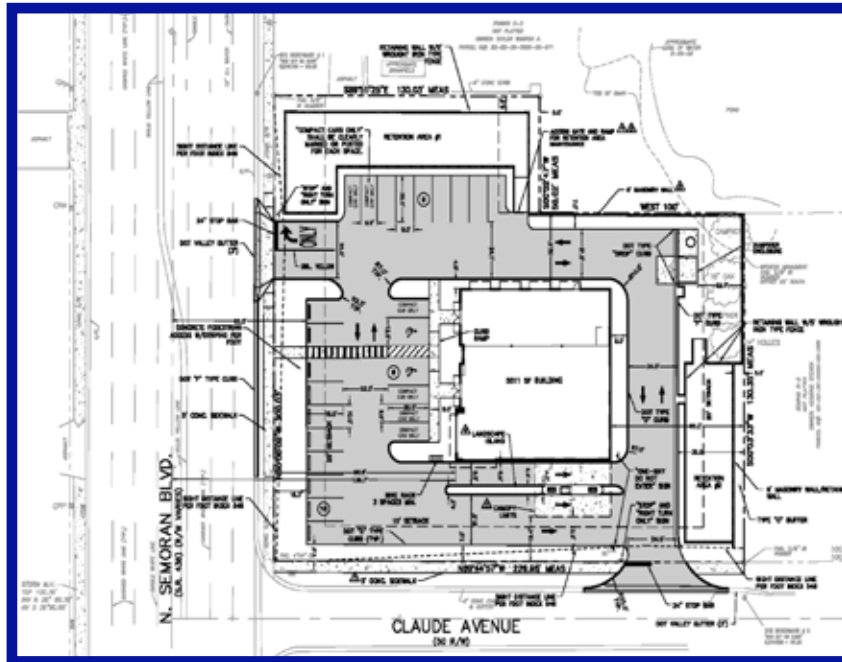
407.291.9000

www.RealPropertySpecialists.com

REAL PROPERTY SPECIALISTS, INC
Appraisers • Brokers • Consultants

Bank Building

Orlando, Florida



407-291-9000
www.RealPropertySpecialists.com

REAL PROPERTY SPECIALISTS, INC
Appraisers • Brokers • Consultants

The information contained herein is submitted subject to errors, omissions, prior sale or lease, or withdrawal without notice.