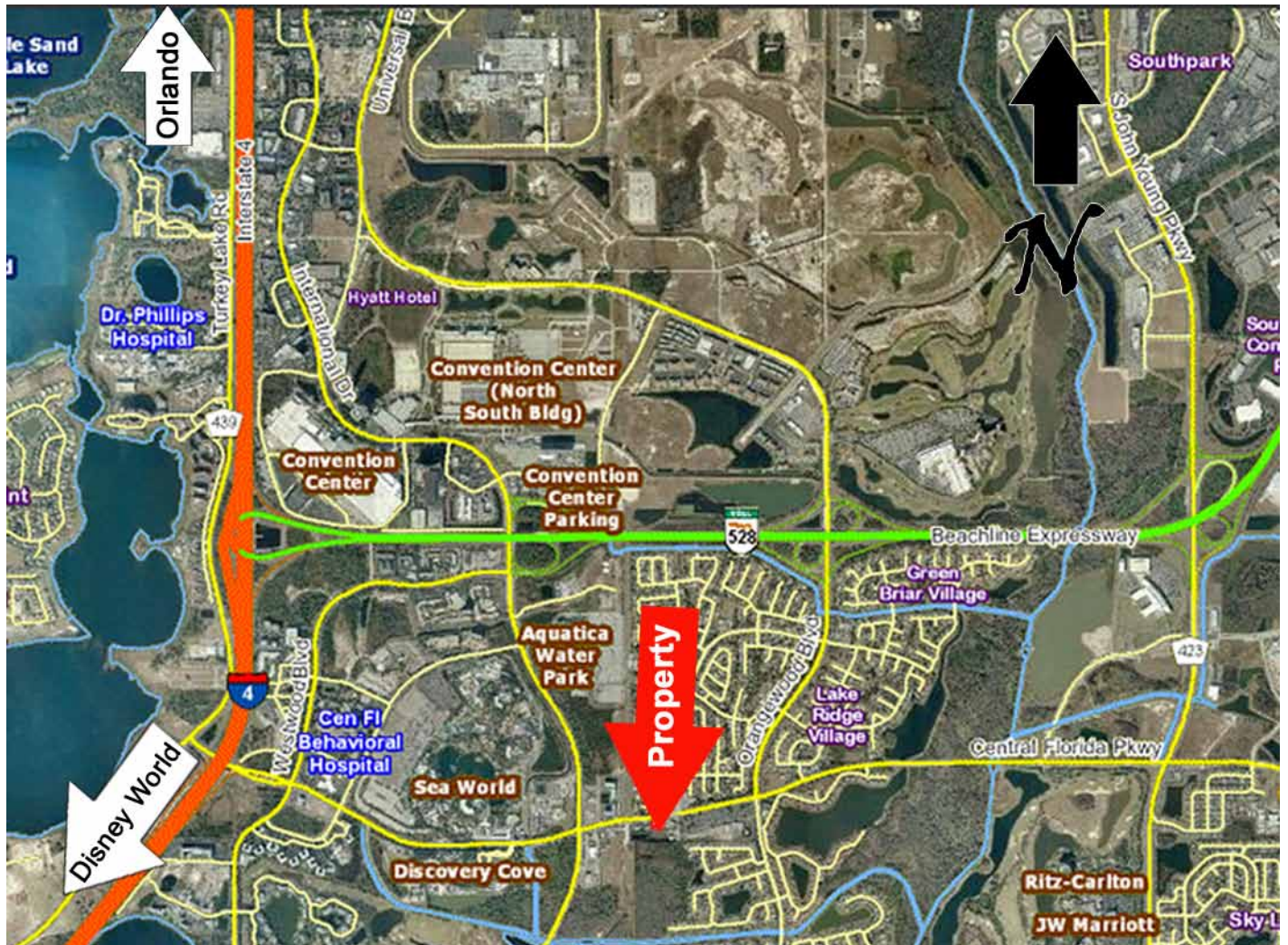


# Out Parcel for Sale or Ground Lease

## Sea World Attractions Area

**FOR SALE OR GROUND LEASE**



5680 Central Florida Parkway, Orlando, FL

- **Approximate .82 acres outparcel with Off-Site Master Retention (can increase size of site if required)**
- **For Sale at \$950,000 or Ground Lease of \$95,000 per year NNN**
- **Site Approved for up to 10,000 sf Building and 34 parking spaces**
- **Good Access to Site from curb cut, median cut and reverse frontage road**
- **Located in the middle of Sea World's Three Theme parks**

### Tom Heer, Real Property Specialists

2345 West Sand Lake Road

Orlando, Florida 32809

Ofc 407-812-8000, ext. 118

Cell 407-399-6748

tom@realpropertyspecialists.com

2345 W Sand Lake Rd, Suite 100  
Orlando, FL 32809

9622 W Linebaugh Avenue  
Tampa, FL 33626

**T: 407.812-8000 • F: 407.812.8885**  
**www.RealPropertySpecialists.com**



# Out Parcel for Sale or Ground Lease

## Sea World Attractions Area



T: 407.812-8000 • F: 407.812.8885  
[www.RealPropertySpecialists.com](http://www.RealPropertySpecialists.com)

**REAL PROPERTY SPECIALISTS, INC**  
Appraisers • Brokers • Consultants